



First Care Paste



GutVersity

Prebiotics, diverse strains of probiotics and postbiotics.

When calves are young the goal is to feed the gastrointestinal tract.



Egg Proteins

Targets pathogenic organisms.

An increase in bacterial burden leads to an increase in intestinal permeability, bacterial translocation and absorption of endotoxins.



Support Immune Health

IPS (Immune Positioning System)

A unique blend of biologically active polysaccharides and polypeptides. IPS provides unmatched immune support for your calves.

First Care

The story begins at birth! Is your colostrum program on target? As a dairy producer you don't get a second chance with calf health. First Care Paste provides optimal ingredient combinations and potency when overwhelming numbers of pathogens in maternal colostrum threaten calf health and survival. First Care offers a unique combination of whole egg powder, lactic acid producing bacteria, and our patented blend of biologically active polysaccharides (IPS). First Care helps to establish or re-establish beneficial microbial populations in newborn calves. First Care is also beneficial during weaning, climate changes or periods of stress.

Immune Positioning System (I.P.S)

- First Care Paste contains Immune Positioning System (I.P.S), which is a proprietary blend of biologically active polysaccharides and polypeptides which function as immunoregulators. An immunoregulator is any substance that can quiet or activate the immune system, depending on circumstances.



Pre, Pro & Postbiotics

- First Care Paste contains Prebiotics, the most viable Probiotic cultures available and Postbiotics. MicroBiome Engineering focuses on the intestinal microbial community, so avoiding the inherent intestinal health risks of intensive production. Science has revealed that the gut may be the motherboard for the entire body. When Calves are young, the goal is to feed the gastrointestinal tract.



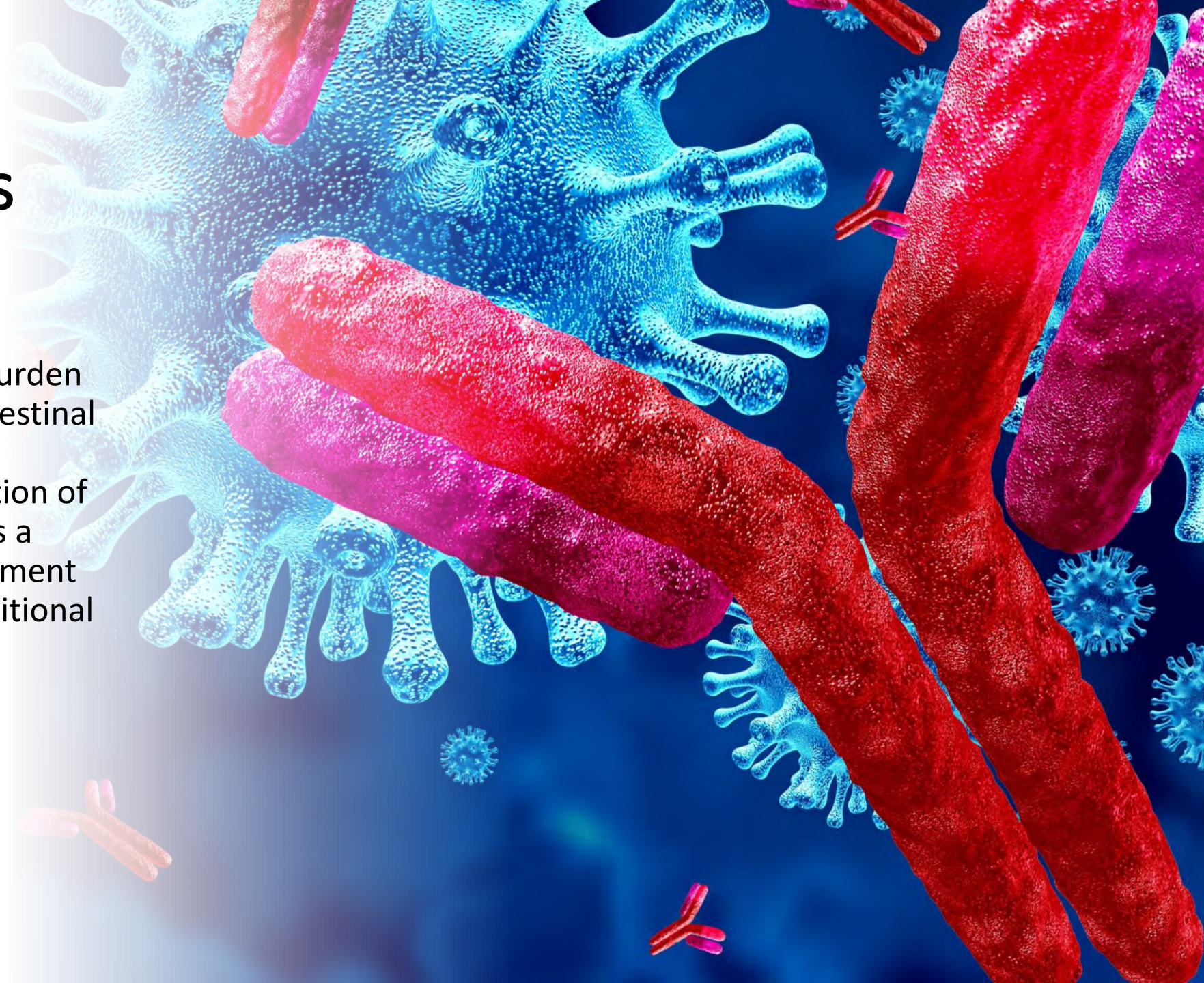


Microbial Activity

- 8 Strains of Lactic Acid Bacteria
 - Bifidobacterium bifidum, Bifidobacterium longum, Enterococcus faecium, Enterococcus thermophilus, Lactobacillus acidophilus, Lactobacillus bulgaricus, Lactobacillus casei, Lactobacillus plantarum
- Prebiotics, Probiotics and Postbiotics
- 10 Billion cfu per Dose

Egg Antibodies

- An increase in bacterial burden leads to an increase in intestinal permeability, bacterial translocation and absorption of endotoxins. Egg Powder is a highly potent feed supplement providing Calves with additional and effective protection.





First Care = A

| | K88 | K99 | S.Typhi | S. Dublin | RTA-G6 | RTA-G10 | Corona | Crypt. | Clost-A | Clost-C |
|----------|-----|------|---------|-----------|--------|---------|--------|--------|---------|---------|
| Sample A | No | 100% | 33% | 30% | 100% | 100% | 100% | 100% | 100% | 100% |
| Sample B | No | 56% | 100% | 100% | 25% | No | No | 25% | 25% | 25% |
| Sample C | No | 27% | 17% | 6% | 25% | No | No | 6% | 25% | 6% |

Here you see the test results always in relation to the best per Antibody.

Sample A- has the highest titer levels for all pathogens besides for Salmonella. For this it is the second best.

Sample B- is good on Salmonella but has **NO! Antibodies for Rota G10 and Bovine Corona Virus** (These two are very important pathogens for Calves) in addition it only contains only 1/4 of the levels of Rota G6, Crypto, Clost A and Clost C.

Sample C- is very poor in quality almost for all antibodies.



IgG (Immunoglobulin G)

- Its not something we talk enough about or have on the brochures but...

We also utilize IgG (Immunoglobulin G) Technology

- “Immune protection in newborn calves relies on a combination of the timing, volume and quality of colostrum consumed by the calf after birth. Poor quality colostrum with inadequate immunoglobulin concentration contributes to failed transfer of passive immunity in calves, leading to higher calf morbidity and mortality.”



First Care Paste

Nutritional Supplement for Newborn Calves

- Designed to Support the Newborn Calf's Natural Defense System
- First Care Paste- Administer 30cc after first colostrum feeding
- Can also be used in times of stress
- 30cc Single Dose Tube (Comes in 25 count Boxes)



First Care Paste Testimonials





Jennifer B.

“The First Care Paste has made a huge difference in the health of our newborn calves. We started using First Care paste in the Spring of 2023 and it has been a game changer. It has reduced scours in our week old calves and seems to give them the boost they need. We love it! I think the products are fantastic and I recommend them to as many people as I can.”



Bobbi H.

“Shortly after that we added in the First Care Paste and the calf program has made so much progress. Calves are healthy, shiny, hungry and ready to eat at every feeding.”



Chad V.

“Then we started using First Care Paste at birth and have pretty much eliminated all cases of scours. We would not go without it now.”