

# Next Care

**PROBIOTIC / PREBIOTIC SUPPLEMENT FOR CATTLE**  
Supports the Immune System • Supports Gut Health • Supports Rumen Development

**DESCRIPTION:**  
Barley contains well grade yeast extract, zinc methionine complex, hydrogenated yeast, sodium propionate (preservative), dried *Bacillus subtilis* fermentation product, *Vaccinia* cell-free extract, egg product, acetic acid and xanthan gum (stabilizer).

Store in cool dry place. No direct sunlight.

	Net Volume	Net Weight
Small Jug	0.5gal / 1.9L	4.5lb / 2.04kg
Large Jug	2.5gal / 9.5L	22.5lb / 10kg

**GUARANTEED ANALYSIS:**

• Crude Protein minimum	3.0%
• Crude Fat minimum	0.5%
• Crude Fiber maximum	2.5%
• Ash maximum	9.0%
• Moisture maximum	82.0%
• <i>Bacillus subtilis</i> 2.0 x 10 <sup>9</sup> cfu/ml (*of zoospore forming units)	

MANUFACTURED EXCLUSIVELY FOR  
IBA INC.  
103 GILMORE DRIVE  
SUTTON, MA 01590  
508-885-6911

1024W

**DIRECCIONES (Specific Gravity = 1.10)**

- Dairy & Beef Calves on Day 1, Arrival or Stress Periods: Drench 15-30ml
- Dairy & Beef Calves: Day 1 to 21: 6-10ml/head/day in the Milk (Split Between 2 Feedings)
- Dairy & Beef Calves: Day 22 to Wean: 6ml/head/day in the Milk (Split Between 2 Feedings)
- Electrolyte Administration: 15ml

Shake Bottle Well Before Each Use.

**INSTRUCCIONES (Gravedad Especifica = 1.10)**

- Beberos en el día 1, su llegada o períodos de estrés: administrar 15-30ml oral
- Beberos del día 1 al día 21: 6-10ml/bebida en la leche (repartido entre 2 tomas)
- Beberos del día 22 al destete: 6ml/bebida en la leche (repartido entre 2 tomas)
- Administración de electrolitos: 15ml
- Chivos en el día 1 o período de estrés: administrar 5ml oral
- Chivos: 3ml/bebida (repartido entre 2 tomas)

Agite bien el frasco antes de cada uso del producto.



# Next Care

---

Next Care brings every element of nature's extraordinary DNA together in perfect, seamless balance. Superior performance, scientific design and masterful technology combine to create a Calf product that is giving the customer the option to not have to use antibiotics at all. This is the definitive antibiotic alternative. Next Care supports Neonatal gut health. Calf diarrhea and lung disease are the most common causes of death in young calves. Early identification and treatment increases survival rates. And it was made for you.

# Next Care

---

**Pathogen control without  
antibiotics:**

**The chance to change the  
world for the better is  
powerful motivation**

**Zinc Methionine**  
Research shows support for lung health.



**Bioactive Polysaccharides**  
Prime and balance the Immune System.

**Bacillus Strains**  
Support compromised intestinal barrier.



**Yeast Culture**  
Feeding Yeast Culture reduces health disorders.

**Yeast Components, Prebiotics and Postbiotics**  
Feed the gastrointestinal tract.



**Egg Protein**  
Targets pathogenic organisms.

**Phytogenics**  
Anti-inflammatory properties.



**Yucca**  
Yucca schidigera soothes the intestinal tissue, reducing inflammation.

# See What's Inside



## Supports Immune Health

*I.P.S. (Immune Positioning System)* is a unique blend of biologically active polysaccharides and polypeptides. This is nature's way to nutritionally assist Calves in balancing cellular function and supporting the immune system to meeting everyday challenges.



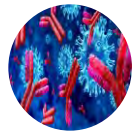
## Drive Calf Production with Yeast's Secret Weapon

The ability of *Yeast Cell Wall* to decrease the prevalence of intestinal pathogenic bacteria and to prevent their colonization in the gastrointestinal tract is well documented.



## Manage Pathogens with Bacillus Strains

*Bacillus subtilis* and *licheniformis* produces large quantities of digestive enzymes to aid the digestion of feed and helps to create an environment of competitive exclusion, wherein pathogenic bacteria are excluded from space on the intestinal wall.



## Patented Specific Proteins

An increase in bacterial burden leads to an increase in intestinal permeability, bacterial translocation and absorption of endotoxins. *Egg Powder* is a highly potent feed supplement providing Calves with additional and effective protection.

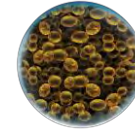


**Yucca has Multifaceted Beneficial Properties**  
*Yucca schidigera* soothes the intestinal tissue, reducing inflammation, reducing the need for excessive mucus production, and improving access to absorption sites for better feed utilization.



**Plant Extracts Working Synergistically have a Greater Effect**

*Plant extracts* have a wide variety of compounds that may present antimicrobial, anti-inflammatory and antioxidant actions and their inclusion into the diet may enhance Calf performance and health.



## Promote Feed Consumption and Rumen Development

Next Care contains highly concentrated *yeast culture*. By stabilizing the intestinal MicroBiome, it is possible to ensure optimal intestinal integrity and thus Calf performance.



## ZINC METHIONINE- How to Sustainably Improve Productivity and Health

Antibody titers against IBR on day 14 following vaccination were 47 and 31% higher in steers supplemented with *Zinc Methionine* compared to control and zinc oxide fed steers, respectively.

# Immune Positioning System (I.P.S)

- Next Care contains Immune Positioning System (I.P.S), which is a proprietary blend of biologically active polysaccharides and polypeptides which function as immunoregulators. An immunoregulator is any substance that can quiet or activate the immune system, depending on circumstances.





# Why I.P.S

## Innate Immunity Balancing Act

- Just enough to prevent/control disease
- Too much of a good thing- immune pathology
- Too little response- pathogen wins
- Immune response needs to maintain homeostasis

Prevent Control  
Disease  
INNATE IMMUNE SYSTEM

Dysfunction





# Why I.P.S

- The immune system's process of responding to a pathogen includes effects that are inherently inflammatory
- It's important to recognize that "inflammation" is not a single process that simply goes up and down
- includes the chemistry of activation—as well as resolution—with many factors involved in regulatory processes that determine to the total outcome
- The immune system is a deeply interconnected system of feedback loops, balances



# Why I.P.S

- Medicine is the science of disease, nutrition is the science of health. Enhanced immune function maximizes state of wellness for better growth and performance.
- Calves are born with an underdeveloped immune system which is slow to respond to pathogens. Biological Response Modifiers activate immunity in less than 24 hours.
- <https://www.drovers.com/news/education/understanding-calf-immunity>



# Medicinal Mushrooms as Immunoregulators

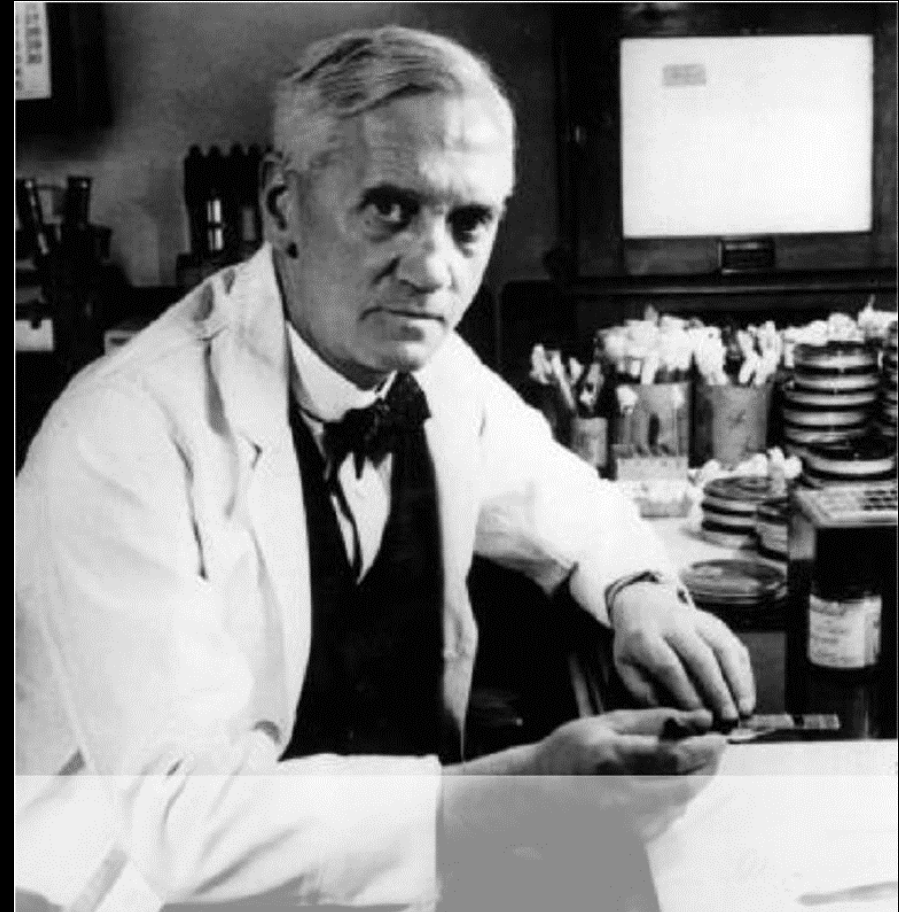
- An immunoregulator is any substance that can quiet or activate the immune system, depending on circumstances
- Medicinal mushrooms can help the immune system stay wide awake and strike the perfect balance between over activity and sluggishness





# Alexander Fleming

- Perhaps it was Alexander Fleming's discovery of penicillin (the antibiotic made using the *Penicillium* fungus) in 1928 that finally cemented the importance of fungi for Western Medicine



# Pre & Postbiotics



- Next Care contains Prebiotics and Postbiotics. MicroBiome Engineering focuses on the intestinal microbial community, so avoiding the inherent intestinal health risks of intensive production. Science has revealed that the gut may be the motherboard for the entire body. When Calves are young, the goal is to feed the gastrointestinal tract.



# Why Prebiotics

- The microorganisms in livestock need to eat. Probiotics feed on prebiotics, complex carbohydrates such as inulin, pectin, and starches.
- Medicinal mushrooms are also a safe and well-established source of natural prebiotics that help modulate the gut microbiota (Li et al., 2021 and Yin, Chaomin et al., 2020)
- There is evidence of the use of mushrooms being associated with changes in the microbiota, such as the promotion of beneficial bacteria, in parallel with improvements in inflammatory parameters (Diling et al., 2017).
- Prebiotics promote the proliferation of the body's innate microbial populations
- As opposed to just adding 'outsider' probiotics in the hope they will colonize, prebiotics encourage the strengthening of existing endogenous host microbial populations

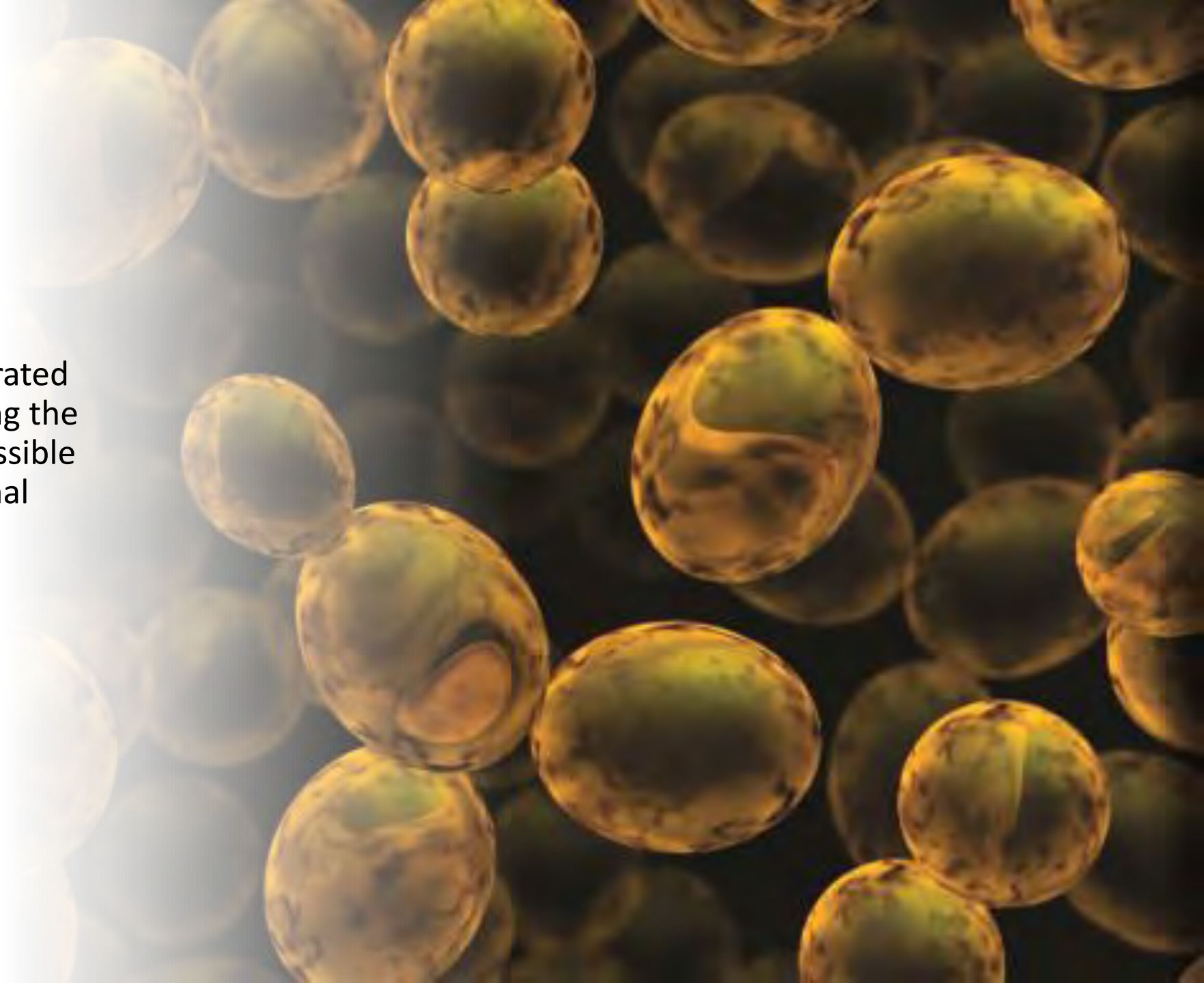


# Why Postbiotics

- Postbiotics are the endgame of probiotics
- Direct Fed Microbials make postbiotics/bioactive compounds
- Exopolysaccharides (substances that microorganisms secrete)
- Some examples of postbiotics include organic acids, bacteriocins, carbonic substances and enzymes
- Probiotics and postbiotics work together to exhibit beneficial effects on livestock health
- Postbiotics contain antimicrobial properties which help fight infections

# Yeast

- We utilize highly concentrated yeast culture. By stabilizing the intestinal ecology, it is possible to ensure optimal intestinal integrity and thus animal performance.





# Why Yeast

- “Calves fed yeast culture had decreased frequency of medical treatments because of reduced incidence of fever and diarrhea and reduced overall morbidity. The improvement in health of calves was consequent to reduction in enteric diseases and culminated with reduced mortality, particularly after 13 days of age, which probably reflected the increased intake of grain and yeast culture after 2 weeks of age. Improvements in survival of calves resulted in numerical improvement in net income of \$48/calf fed yeast culture at the end of the study.” ([Read More](#))

# Bacillus

- *Bacillus subtilis* and *licheniformis* produces large quantities of digestive enzymes to aid the digestion of feed. It also helps to create an environment of competitive exclusion, wherein pathogenic bacteria are excluded from space on the intestinal wall.



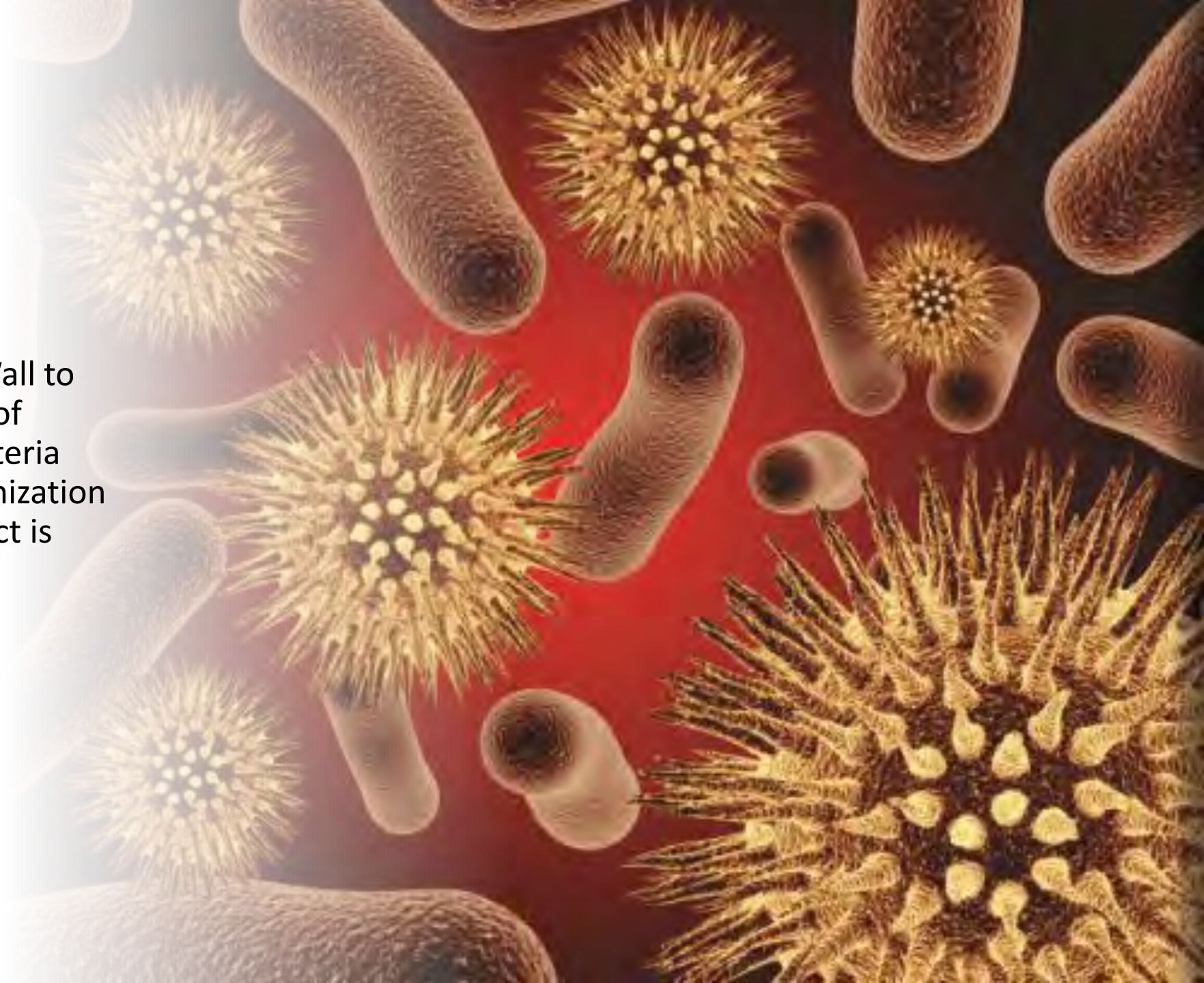


# Why Bacillus

- Perhaps no bacteria are more common in probiotics than *Bacillus subtilis*. This bacterium is often used, as the spores it produces resist heat and other environmental extremes. It has been shown to perform the functions of production of antimicrobial metabolites and competitive bacterial exclusion interactions. *Bacillus subtilis* is also involved in mucosal conditioning and immune modulation

# Yeast Cell Wall

- The ability of Yeast Cell Wall to decrease the prevalence of intestinal pathogenic bacteria and to prevent their colonization in the gastrointestinal tract is well documented.





# Why Yeast Cell Wall

- YCW products enhancing intestinal barrier function
- YCW altering bacterial populations within the gastrointestinal (GI) tract
- YCW while limiting pathogenic bacteria translocation and release of toxins systemically, can greatly benefit the host through reducing inflammation
- There is also evidence demonstrating YCW can target pathogenic bacteria within the GI tract
- YCW products can directly bind to pathogenic bacteria, including Salmonella, Escherichia coli, Clostridia, Listeria, and Fusobacteria

# Yucca schidigera

- Feeding Yucca schidigera soothes the intestinal tissue, reducing inflammation, reducing the need for excessive mucus production, and improving access to absorption sites for better feed utilization.





# Why *Yucca schidigera*

- *Yucca* is used in livestock agriculture to reduce ammonia and control odor in housed and more extensive production systems
- *Yucca* offers a biological approach to confinement livestock waste Management, ammonia and noxious gas problems
- *Yucca* extract is a natural non-ionic surfactant and wetting agent

# Phytogenics

- Plant extracts have a wide variety of compounds that may present antimicrobial, anti-inflammatory and antioxidant actions and their inclusion into the diet may enhance Calf performance and health.



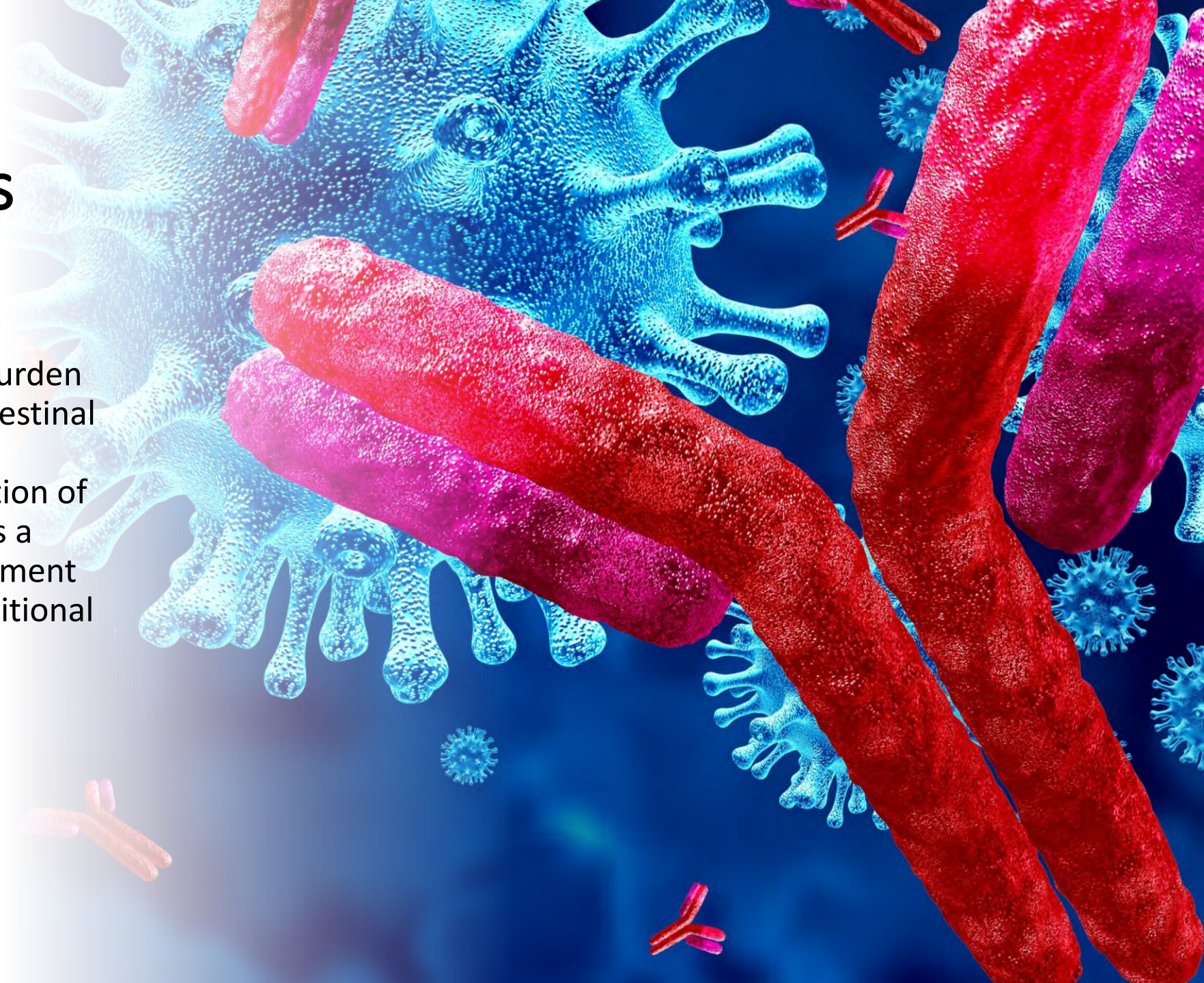


# Why PhytoGenics

- A valuable tool to encourage feed intake and enhance nutrient utilization, which improves feed efficiency
- The effect of phytochemicals is dose-dependent revealing the importance of defining the optimal dose of each phytochemicals under specific conditions
- Liver abscess disease in cattle has long been considered to be caused by damage to the ruminal lining (rumenitis) subsequent to ruminal acidosis
- One non-antibiotic support for liver health may be the incorporation of phyto-genic compounds
- [Interesting Article](#)

# Egg Antibodies

- An increase in bacterial burden leads to an increase in intestinal permeability, bacterial translocation and absorption of endotoxins. Egg Powder is a highly potent feed supplement providing Calves with additional and effective protection.





# Why Egg Antibodies

- Egg antibodies (IgY) have a high binding capacity and act mainly in the gut. They also have a high potency in identifying the pathogens

# Zinc Methionine

- How to Sustainably Improve Productivity and Health

A large, solid purple circle occupies the right half of the image. Inside the circle, the lowercase letters 'zn' are written in a bold, black, sans-serif font. The 'z' and 'n' are positioned side-by-side, centered horizontally within the circle.

zn



# Why Zinc Methionine

- Zn-Met supplementation reduced the diarrhea incidence (35.7 % [Zn-Met] vs. 58.9 % [CON])
- Improved the average daily gain (ADG) (500 g/d [Zn-Met] vs. 422 g/d [CON])
- Feed efficiency (feed-to-gain ratio: 2.05 [Zn-Met] vs. 2.47 [CON]) significantly during the second week after birth ( $P < 0.05$ )
- Antibody titers against IBR on day 14 following vaccination were 47 and 31% higher in steers supplemented with Zinc Methionine compared to control and zinc oxide fed steers, respectively.

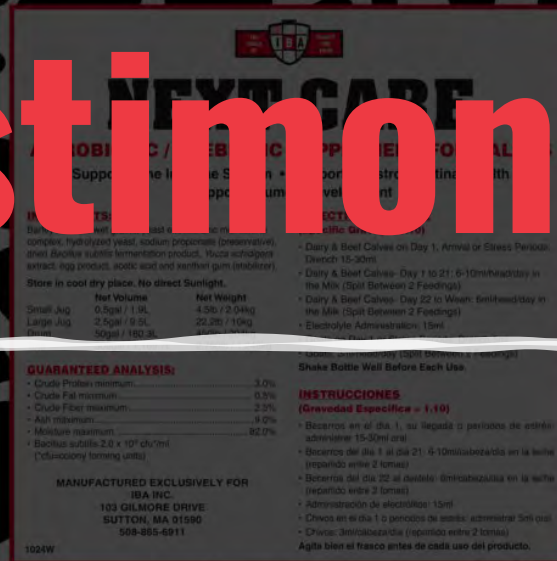


# Why Zinc Methionine

- Zn-Met improved the integrity of the intestinal mucosa barrier, as indicated by increases in the height of the ileal villi



# Next Care Testimonials





# Twin W.

“Beyond happy with Next Care used in young calves. We have been able to minimize antibiotic treatments while also increasing our weaned calf weight from week 1-10. Recent group on Next Care had a starting weight of 105lbs and after 10 weeks averaged 271lbs (Group of 45 calves). If I had to choose any one product to give Holstein calves, Next Care would be it! “



# Eugene H.

"I sell lots of Next Care to my customers. It's my number one selling product. Nearly everyone one of them continually tells me that they don't want to start a group of calves without the Next Care product. I've personally seen the effect that it has on a farm and am a very firm believer in the product. Scours cases are reduced significantly as well as the overall stress of the animals. Respiratory issues are minimized as well. If you try it, I'm confident, you too will become a promoting fan!"



# Sarah K.

"I have been using Next Care for about a week and have had a significant decrease in sickness. Since using this product my calves are bouncing off of the walls and are always eager to eat. I had a calf that came to me sick and not doing well. After 2 days of giving this to her she was 90% better. I have never been able to find a product that worked and that has cut my antibiotic use by 95%."



# Sandy E.

“Saw a HUGE drop in sick, scouring calves. Zero pneumonia. Easy to mix. Twice a day with Next Care in the milk. Zero death loss out of 100 calves. Scours easily rectified with additional Next Care during the scour episode. Zero pneumonia.”



# Marco G.

“We tried using Next Care because we have a lot of problems with calves when we treat them because they do not respond exactly how we wanted them to. We started using this product to do something different or at least try something else that’s new and it has turned out great! The calves respond faster. We have less mortality rates, which is what we really want. Well, any calf operation wants to have less mortality rates. And that is why we started using Next Care. We have been using it for a year or a year and a half. And it has worked great for us! The results have been really good.”



# Eddie J.

“We contacted Mariah, to know how to help all of our calves, and she told us to use Next Care. And it works wonderfully! We waited a week to see results, and there sure were great results! We have used Next Care for a month now, and the calves are happier, have more energy, and are healthier. Next Care makes my job better because I don’t have to worry about sick calves anymore, so it makes my job easier. We thought it cost a pretty penny at the beginning, but now we realize that it is worth every cent we pay.”



# Cory B.

“In addition to revamping our vaccine program, we have turned to alternative treatments for scours other than antibiotics. Something that has really been working well for us is drenching all calves with 30ml of Next Care upon arrival at Windy Ridge, and then drenching again with another 30ml of Next Care on day 5. This has proven to nearly eliminate all of our scours.”